

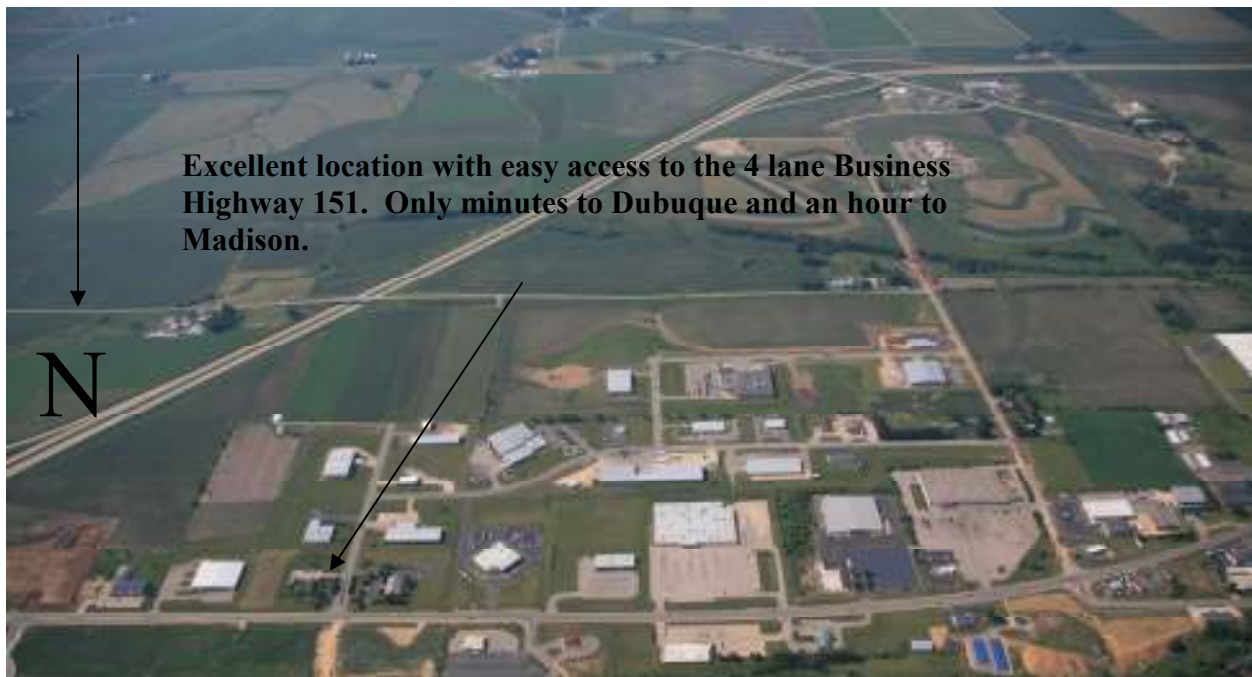
PAIDC

Platteville Area Industrial Development Corporation



Now Available: 3,200 s.f. Professional Building in Platteville Wisconsin

- 2 level modern professional office building.
- Located on a prime lot at the corner at the entrance to the Industrial Park on Business 151.
- 3 acre lot.
- Housed an engineering and design firm.
- Very energy efficient.
- UW-Platteville is a source of highly-trained employees.





Labor Force

- UW-Platteville is a source of both part-time and graduates for the work force.(7,000 students growing to 8,000)
- Over 7,000 of 50,000 population in Grant County commute out of Grant County
- Access to Dubuque’s 50,000 population is only minutes away on new 4 lane
- For population 25 years and over
 - High school or higher: 87.9%
 - Bachelor's degree or higher: 34.5%
 - Graduate or professional degree: 16.2%
- New 4 lane Highway 151 makes Platteville more accessible to more workers.
- Training for workers is available locally at UW-Platteville and Southwestern Technical College which is located only 1/2 hour away in Fennimore

52 Means Drive, Suite 104
 Platteville, WI 53818
www.plattevilleindustry.com
 Email:

plattevilleindustry@centurytel.net

Phone: 608-348-3050
 Fax: 608-348-3426
 Cell: 608-732-7855

